



MULTI BOOM 1018

INSTRUCTION LEAFLET

(Pt.No.2400-0720 Issue 3 Dated 02 Dec 2010)

SAFETY PRECAUTIONS

AN IMPORTANT MESSAGE FOR OWNERS & OPERATORS OF C-Dax ATTACHMENTS AND ACCESSORIES

Be warned of the dangers of loading your ATV or other vehicle in excess of its carrying capacity. It is important to understand that any loads or attachments whether fastened to or placed on a vehicle or ATV will alter the stability or handling characteristics of that vehicle or ATV. Spray tanks or other equipment must be filled only to a level where the gross weight is within the load limit of the ATV or other vehicle.

Safety is a primary concern in the design, manufacture, sale, and use of spray tanks and other equipment. As manufacturers of spray tanks and other equipment we want to confirm to you, our customers, our concern for safety. We take this opportunity to remind you about the simple, basic and common sense rules of safety when using spray tanks and other equipment. Failure to follow these rules can result in severe injury or death to operators and bystanders.

It is essential that everyone involved in the assembly, operation, transport, maintenance and storage of this equipment be aware, concerned, prudent and properly trained in safety.

This also applies to equipment that is loaned or rented to someone who has not read the owner's manual and is not familiar with the operation of application equipment.

- NEVER EXCEED THE LOAD LIMIT CAPACITY OF THE ATV OR OTHER VEHICLE.
- PLEASE NOTE THAT FILLING THE SPRAY TANK OR OTHER EQUIPMENT COMPLETELY AND OR THE ATTACHMENT OF ADDITIONAL EQUIPMENT TO THE ATV MAY EXCEED THE ATV'S MAXIMUM LOAD CAPACITY, AND ADVERSELY AFFECT THE STABILITY OR THE ATV OR OTHER VEHICLE.
- CARGO SHOULD BE PROPERLY DISTRIBUTED AND SECURELY ATTACHED.
- REDUCE SPEED WHEN CARRYING CARGO OR PULLING A TRAILER OR TRAILED APPLICATION EQUIPMENT AND ALLOW GREATER DISTANCE FOR BRAKING.
- NEVER ALLOW ANYONE TO RIDE ON YOUR SPRAYER OR OTHER EQUIPMENT.
- ALWAYS FOLLOW THE INSTRUCTIONS IN THE OWNER'S VEHICLE MANUAL FOR CARRYING CARGO OR PULLING A TRAILER.
- PROPER MAINTENANCE IN LINE WITH MANUFACTURER'S RECOMMENDED MAINTENANCE PROCEDURES IS ESSENTIAL.
- BEFORE APPLYING CHEMICALS, READ THE LABEL OF THE CHEMICAL MANUFACTURER OR SUPPLIER FOR PERSONAL PROTECTIVE EQUIPMENT AND OPERATE AS RECOMMENDED.
- THE SAFETY OF ALL CHEMICALS USED IN AGRICULTURE IS UNDER THE JURISDICTION OF A GOVERNMENT AGENCY, IE N.Z. MINISTRY FOR THE ENVIRONMENT; USA ENVIRONMENTAL PROTECTION AGENCY. FURTHER LOCAL GOVERNMENT OR STATE LAWS MAY APPLY.

DESCRIPTION

The Multiboom is a compact, lightweight, rugged spray boom suitable for spraying where tall brush weeds or other obstacles may damage a wider boom. The boom is only 1.5 metres wide but has an effective spray width of up to 4.5 metres. The boom is divided into five spraying sections each controlled by a shut-off valve located on each of the nozzle bodies. The outer nozzles are mounted on swivel fittings that allow the effective spray width to be adjusted.

Optional parts are as follows

4500-1050	Standard Mounting Brackets
1074	Where an existing Quicksmart Frame is mounted
1073	Quicksmart frame (to be used in conjunction with 1074)

INSTALLATION

All Models

Cut the delivery hose from the sprayer at a convenient point and fit the quick release valve from the dry break kit provided to the sprayer hose.

Cut the boom delivery hose to match and fit the male quick release fitting.

Fit the remaining male QR fitting to the spray gun hose.

Secure all hose connections with the hose clamps provided.

CALIBRATION

4.5M Effective Width

To calibrate the Multiboom, the outer nozzles must be adjusted so that their effective spray width is 1.5M each. This makes the effective width of the boom 4.5M.

Because the outer nozzles are covering an area three times as wide as each nozzle in the center section, they must be selected to produce three times the flow of each center nozzle at the same pressure.

Centre Tips (3 required)	Outer Tips (2 required)	Boom Flow @ 2bar L/Min
Yellow 02 (Pt No. 5300-9800)	OC06 (Pt No. 5300-3700)	5.83

Operating Shut-off Valves

Locate the red shut-off knob on the side of each nozzle body. Rotate the knob clockwise to shut the flow off to the tip, anti-clockwise to allow fluid through the tip. The knob may need to be pushed in towards the nozzle body in order to relocate on the thread.

DETERMINING APPLICATION RATE

Once the tip size and effective spray width have been set, measure the flow from the tips using a measuring jug. Calculate the boom flow rate as follows; (all flows in Litres/Minute)

$$\text{Boom Flow} = (\text{Centre tip flow} \times 3) + (\text{Outer tip flow} \times 2)$$

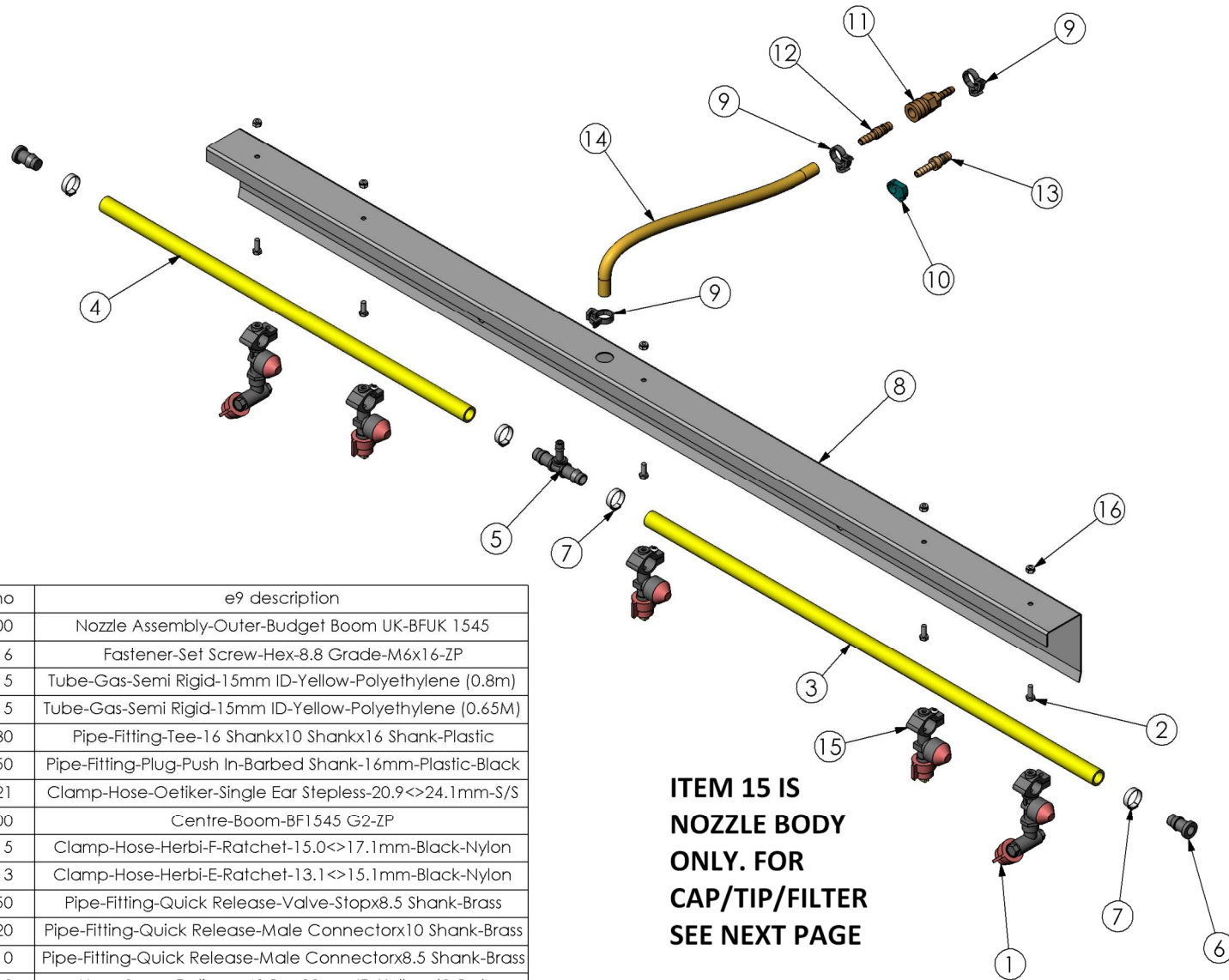
Calculate the application rate as follows;

$$L/ha = \frac{\text{Boom Flow (L/Min)} \times 600}{\text{Effective Spray Width (Metres)} \times \text{Speed (KPH)}}$$

SPARE PARTS

Part Number	Description	Quantity Required
1600-6000	Nozzle Cap	5
3400-5400	Nozzle Filter	5
4100-0010	8.5mm Delivery Hose	By the metre as needed
5300-1900	Nozzle Body Inner	3
5300-1600	Nozzle Body Outer	2
5300-2600	Swivel Body Outer	2
5300-3700	OC-06 Brass Nozzle Tips	2
5300-9800	110WR02 Nozzle Tips	3

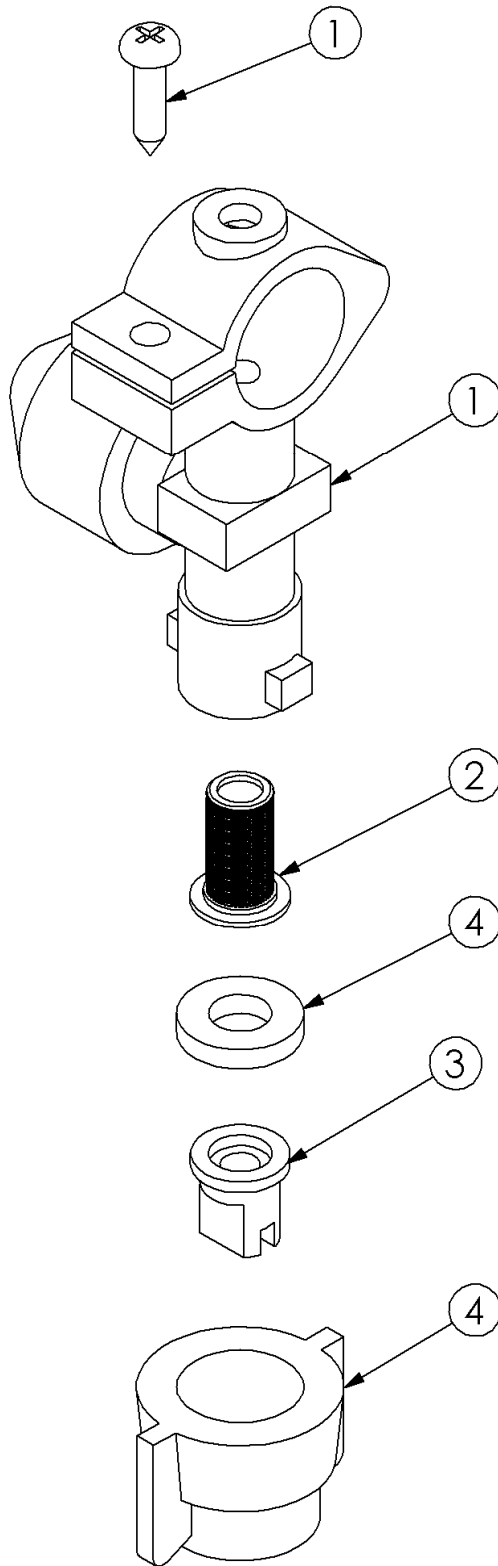
PARTS DIAGRAM AND PARTS LIST



ITEM NO.	QTY.	e9 part no	e9 description
1	2	5300-1100	Nozzle Assembly-Outer-Budget Boom UK-BFUK 1545
2	5	3290-0616	Fastener-Set Screw-Hex-8.8 Grade-M6x16-ZP
3	1	8840-3715	Tube-Gas-Semi Rigid-15mm ID-Yellow-Polyethylene (0.8m)
4	1	8840-3715	Tube-Gas-Semi Rigid-15mm ID-Yellow-Polyethylene (0.65M)
5	1	6200-9180	Pipe-Fitting-Tee-16 Shankx10 Shankx16 Shank-Plastic
6	2	6200-6250	Pipe-Fitting-Plug-Push In-Barbed Shank-16mm-Plastic-Black
7	4	2000-2021	Clamp-Hose-Oetiker-Single Ear Stepless-20.9<>24.1mm-S/S
8	1	1900-1300	Centre-Boom-BF1545 G2-ZP
9	3	2000-0015	Clamp-Hose-Herbi-F-Ratchet-15.0<>17.1mm-Black-Nylon
10	1	2000-0013	Clamp-Hose-Herbi-E-Ratchet-13.1<>15.1mm-Black-Nylon
11	1	6200-7250	Pipe-Fitting-Quick Release-Valve-Stopx8.5 Shank-Brass
12	1	6200-7220	Pipe-Fitting-Quick Release-Male Connectorx10 Shank-Brass
13	1	6200-7210	Pipe-Fitting-Quick Release-Male Connectorx8.5 Shank-Brass
14	1	4100-0010	Hose-Spray-Delivery-40 Bar-10mm ID-Yellow (2.5m)
15	3	5300-1900	Nozzle Body-DCV-QCxC22x10-W/Shut Off-Incl O'Ring-Less Cap
16	5	3170-0006	Fastener-Nut-Nyloc-M6-ZP

**ITEM 15 IS
NOZZLE BODY
ONLY. FOR
CAP/TIP/FILTER
SEE NEXT PAGE**

INNER NOZZLE BODY PARTS



Item No.	e9 part no	e9 description	QTY.
1	5300-1900	Nozzle Body-DCV-QCx22x10-W/Shut Off-Incl O'Ring-Less Cap	1
2	3400-5400	Filter-Nozzle Tip-50 Mesh-Plastic	1
3	5300-XXXX	Nozzle-Tip-SPECIFY TYPE WHEN ORDERING	1
4	1600-6000	Cap-Nozzle-Fan-QC-Red-Incl Gasket	1