



ELIMINATOR TANK Pt. No 1017 INSTRUCTION LEAFLET

(Pt.No.2400-0820 Issue 6 Dated 01 December 2010)

SAFETY PRECAUTIONS

This product MUST NOT be mounted on an ATV Carrier.

Use in any manner other than that recommended by the manufacturer vests sole responsibility with the operator.

Read manufacturers instructions before mixing chemicals. Always wear protective clothing when handling or using chemicals.

Description

The C-Dax Eliminator Tank assembly is a 50 Litre self-contained spray tank that can be mounted directly onto the Eliminator frame. This eliminates the need for a separate spray unit. It is especially suitable where there is insufficient space on the towing vehicle for a Sprayrider or 200L spray unit. It is supplied with an electrical cable to connect to the Eliminator control unit and delivery hose to connect to the Eliminator fluid connection. The Eliminator tank assembly can be fitted to Eliminators manufactured after 1 December 1998. It is not suitable for fitting to ganged Eliminators.

Contents

Tank assembly complete with; lid, pump and wiring, suction filter, flow splitter and delivery hose. Cable Ties

Installation

Remove the four screws securing the blue cover and remove the cover.

Connect the short length of delivery hose to the tee at the centre of the Eliminator fluid line and run it between the tow bar sockets on the frame.

Locate the 8mm quick release valve and mating part from the Eliminator parts kit.

Place the tank on the frame and slide it forward until the lip at the front is just clear of the eliminator shroud. Route the delivery hose under the tank but over the wipers then between the towbar sockets on the frame, connecting it to the tee at the centre of the Eliminator fluid line. Because the Eliminator is designed to operate at low pressure, hose clamps are not required.

Slide the tank fully forward to locate under the front shroud of the Eliminator.

Unwind the electrical cable and run it forward to connect with the cable from the Eliminator control unit. Secure the cable with the cable ties provided or tape.

Ensure the tank bracket is attached to the blue cover and slide the tank bracket onto the hook at the rear of the frame. Screw the blue cover back onto the tank and ensure that it is secure. Ensure that the hose and cable are secured so that there is only enough slack to allow access to the delivery hose under the tank. There must be no loops behind the tank to catch on foliage.

Note

The tank assembly does not require the hose assembly or threaded quick release valve supplied with the Eliminator. These parts are used to connect the Eliminator to the Sprayrider or 200L series sprayers.

Operating Instructions

Place fluid in the tank through the strainer basket. Turn the control unit switch on. The pump will run for a period then turns off as described in the Eliminator owner's manual.

Calibration

The following table gives the nominal application rates for the settings on the control unit. The table should be used as a guide only.

Nominal Application Rates (Litres per Hectare)

Control Position	8 Kph	12 Kph
1	3	2
2	8	5
3	15	10
4	22	14
5	27	18
6	33	22
7	37	25

Maintenance

Cleaning Tank. When wiping is finished rinse the tank with clean water and pump the contents out through the wiper. A triple rinse is recommended. The tank may also be drained by removing the drain plug at the bottom of the sump.

Filter Maintenance. After each use it is recommended that the suction filter element and the flow plate filters, located under the white nuts at the pump outlet, be removed and cleaned.

Note

When replacing the flow plates and filters ensure that the check valve filter is installed in the delivery line rather than the return line to the tank. Note also that the flow plates fitted to the Eliminator tank are not interchangeable with those supplied with the Eliminator hose assembly or with the earlier Z Wiper models.

Pressure Switch Adjustments. The pump pressure switch is factory set to 35 psi. Adjustment should not be necessary under normal operating conditions. Increasing the pressure setting will not increase pump flow but may reduce pump life.

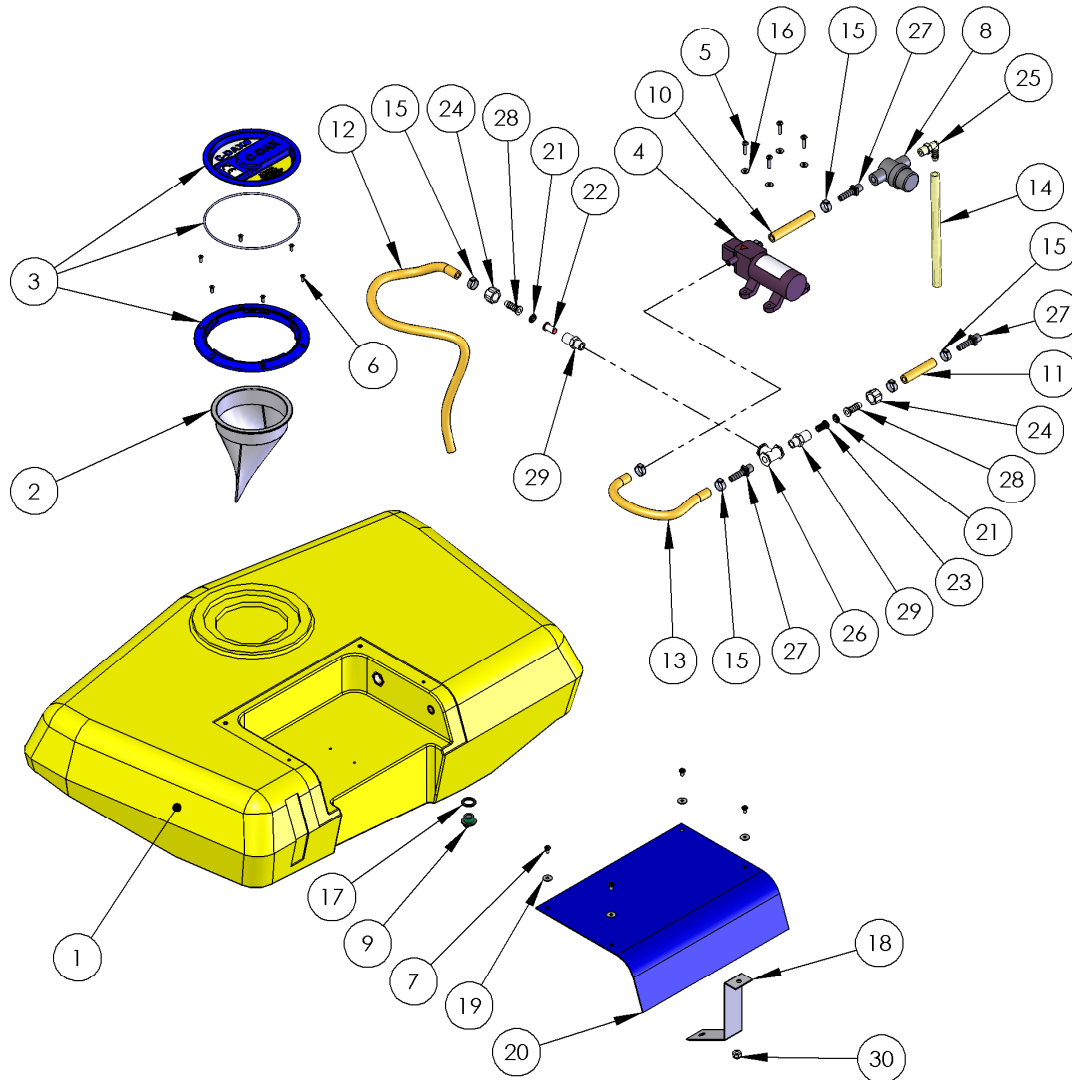
Trouble shooting

- Pump will not prime:** Check that the suction filter bowl is tight.
 Check that the filter bowl seal has not been dislodged.
 Check that the suction filter is not blocked.
- Pump pulses:** Check that the flow plates and filters beneath the white nuts in the delivery and return lines are not blocked.
- Pump will not run:** Check electrical connections and control unit fuse.

Spare Parts

The following spare parts are stocked for the Eliminator Tank and should be ordered quoting the part number. Only parts likely to be replaced by the operator are listed. For other parts please contact your dealer.

Part No.	Description	Qty Per Unit
8427-6005	Lid & Ring Assembly-D150-C-Dax Vented-Blue-Nylon	1
3400-1110	Filter-Basket-D150-Mesh	1
4100-0008	Hose-Spray-Delivery-40 Bar-8.5mm ID-Yellow	1.2M
6800-4000	Pump-Flojet-LF12-12 Volt-3.8LPM-10mm Hose Shanks	1
6800-4020	Pump-Flojet-LF12-Motor-12V	1
6800-4030	Pump-Flojet-LF12-PumpHead Complete-Threaded Ports	1
6800-4040	Pump-Flojet-LF12-Switch-Pressure-60PSI	1
3700-9130	Gasket-Washer-17x23x2-Rubber	1
6200-6260	Pipe-Fitting-Plug-Thumb Screw-3/8BSPM-Black-Plastic	1
3400-5410	Filter-Nozzle-Tip-Incl Check Valve-50Mesh-5PSI-SS Ball-Plastic	1
3400-5400	Filter-Nozzle Tip-50 Mesh-Plastic	1
5300-5100	Nozzle-Plate-Teejet-Orifice-0.063in-SS	2
6250-3001	Plug-Electrical-2 Pin-Male-20 Amp-With Cover	1
3400-2980	Filter-In Line-Hypro-50 Mesh S/S-1/2NPTM-Polpropylene	1



ITEM NO.	QTY.	e9 part no	e9 description
1	1	7500-5000	Rota-Tank-Eliminator-Yellow-MDPE
2	1	3400-1110	Filter-Basket-D150-Mesh
3	1	8427-6005	Lid & Ring Assembly-D150-C-Dax Vented-Blue-Nylon
4	1	6800-4000	Pump-Flojet-LF12-12 Volt-3.8LPM-10mm Hose Shanks
5	4	3110-0520	Fastener-Machine-Screw-Pan-M5x20-Pozi-ZP
6	6	3270-8012	Fastener-Self Tap-Screw-CSK-8Gx1/2"-Pozi-Stainless
7	4	3110-0508	Fastener-Machine-Screw-Pan-M5x8-Slot-ZP
8	1	3400-2980	Filter-In Line-Hypro-50 Mesh S/S-1/2"NPTM-Polpropylene
9	1	6200-6260	Pipe-Fitting-Plug-Thumb Screw-3/8BSPM-Black-Plastic
10	1	4100-0008	Hose-Spray-Delivery-40 Bar-8.5mm ID-Yellow (0.105m)
11	1	4100-0008	Hose-Spray-Delivery-40 Bar-8.5mm ID-Yellow (0.07m)
12	1	4100-0008	Hose-Spray-Delivery-40 Bar-8.5mm ID-Yellow (1.2m)
13	1	4100-0008	Hose-Spray-Delivery-40 Bar-8.5mm ID-Yellow (0.28m)
14	1	8840-8410	Tube-Transluscent-10MM-100PSI (0.225m)
15	7	2000-2014	Clamp-Hose-Oetiker-Single Ear Stepless-1.4.5<->7.0mm-S/S
16	4	3310-6005	Fastener-Washer-Flat-M5-ZP
17	1	3700-9130	Gasket-Washer-17x23x2-Rubber
18	1	1300-8400	Bracket-Tank-Eliminator-ZP
19	4	3310-9210	Fastener-Washer-Flat-3/16"x7/8"x1.5-Grade 304-Stainless
20	1	2250-8300	Cover-Tank-Eliminator-PC
21	2	5300-5100	Nozzle-Plate-Teejet-Orifice-0.063in-SS
22	1	3400-5410	Filter-Nozzle-Tip-Incl Check Valve-50Mesh-5PSI-SS Ball-Plastic
23	1	3400-5400	Filter-Nozzle Tip-50 Mesh-Plastic
24	2	6200-5550	Pipe-Fitting-Nut-Swivel-11/16UNFF-Plastic
25	1	6200-2400	Pipe-Fitting-Elbow-10 Shankx1/4NPTM-Nylon
26	1	6200-9100	Pipe-Fitting-Tee-1/4BSPFx1/4BSPFx1/4BSPF-Plastic
27	3	6200-9340	Pipe-Fitting-Teejet-Straight-10 Shankx1/4NPTM-Plastic
28	2	6200-8220	Pipe-Fitting-Straight-10 Shank-Swivel-Suit Fly Nut-Plastic
29	2	6200-7380	Pipe-Fitting-Reducer-11/16UNCmx1/4UNFM-Straight-Plastic
30	1	3170-0008	Fastener-Nut-Nyloc-M8-ZP