



OWNER'S MANUAL
FOR THE



MAGNESIUM OXIDE SPREADERS
MAGMASTER

C-Dax Ltd
PO Box 1010, 145 Harts Road
Tiritea, Palmerston North
Ph:06 354 6060
Fax:06 355 3199
E-Mail: sales@c-dax.co.nz
www.c-dax.co.nz

SAFETY PRECAUTIONS

MAGMASTER 65/165

AN IMPORTANT MESSAGE FOR OWNERS & OPERATORS OF C-Dax ATTACHMENTS/ACCESSORIES

Be warned of the dangers of loading your ATV or other vehicle in excess of its carrying capacity. It is important to understand that any loads or attachments whether fastened to or placed on a vehicle or ATV will alter the stability or handling characteristics of that vehicle or ATV. Spray tanks or other equipment must be filled only to a level where the gross weight is within the load limit of the ATV or other vehicle.

Safety is a primary concern in the design, manufacture, sale, and use of spray tanks and other equipment. As manufacturers of spray tanks and other equipment we want to confirm to you, our customers, our concern for safety. We take this opportunity to remind you about the simple, basic and common sense rules of safety when using spray tanks and other equipment. Failure to follow these rules can result in severe injury or death to operators and bystanders.

It is essential that everyone involved in the assembly, operation, transport, maintenance and storage of this equipment be aware, concerned, prudent and properly trained in safety.

This also applies to equipment that is loaned or rented to someone who has not read the owner's manual and is not familiar with the operation of application equipment.

- NEVER EXCEED THE LOAD LIMIT CAPACITY OF THE ATV OR OTHER VEHICLE.
- ALL ATV AND TRAILED EQUIPMENT TYRES SHOULD BE INFLATED TO MANUFACTURERS RECOMMENDED OPERATING PRESSURES.
- PLEASE NOTE THAT FILLING THE SPRAY TANK OR OTHER EQUIPMENT COMPLETELY AND OR THE ATTACHMENT OF ADDITIONAL EQUIPMENT TO THE ATV MAY EXCEED THE ATV'S MAXIMUM LOAD CAPACITY, AND ADVERSELY AFFECT THE STABILITY OF THE ATV OR OTHER VEHICLE.
- CARGO SHOULD BE PROPERLY DISTRIBUTED AND SECURELY ATTACHED.
- REDUCE SPEED WHEN CARRYING CARGO OR PULLING A TRAILER OR TRAILED APPLICATION EQUIPMENT AND ALLOW GREATER DISTANCE FOR BRAKING.
- NEVER ALLOW ANYONE TO RIDE ON YOUR SPRAYER OR OTHER EQUIPMENT.
- ALWAYS FOLLOW THE INSTRUCTIONS IN THE OWNER'S VEHICLE MANUAL FOR CARRYING CARGO OR PULLING A TRAILER.
- PROPER MAINTENANCE IN LINE WITH MANUFACTURER'S RECOMMENDED MAINTENANCE PROCEDURES IS ESSENTIAL.
- BEFORE APPLYING CHEMICALS, READ THE LABEL OF THE CHEMICAL MANUFACTURER OR SUPPLIER FOR PERSONAL PROTECTIVE EQUIPMENT AND OPERATE AS RECOMMENDED.
- THE SAFETY OF ALL CHEMICALS USED IN AGRICULTURE IS UNDER THE JURISDICTION OF A GOVERNMENT AGENCY, IE N.Z. MINISTRY FOR THE ENVIRONMENT; USA ENVIRONMENTAL PROTECTION AGENCY. FURTHER LOCAL GOVERNMENT OR STATE LAWS MAY APPLY.

SAFETY PRECAUTIONS

Before attempting to install or operate the equipment, read and understand the manual thoroughly. **Failure to comply with this instruction constitutes improper use and will invalidate the warranty.**

Throughout this manual there are highlighted text boxes containing warnings, cautions and notes.

Warnings are mandatory instructions to prevent serious injury or permanent damage.

Cautions are advisory instructions to ensure reliable operation of the equipment.

Notes are for convenient operation.

- Do not overload your spreader. The maximum permissible payload is 40 Kg.
- Never use dirty product or product with stones or lumps.
- Ensure that your towing vehicle is adequate for the task. The maximum tare weight is 97 Kg.
- Never allow anyone to ride on the spreader.
- **Keep the spreader in good condition.** Cleanliness and maintenance are essential for safe and trouble free operation.
- Never leave product in the hopper or store the spreader without cleaning it.

C-Dax MAGMASTER

OWNER'S MANUAL

(Pt.No.2400-6600 Issue 8, Dated May 2011)

TABLE OF CONTENTS

2	Safety Precautions
4	Table of Contents
5	Introduction
	Description
	Specifications
	Order Information
6	Warranty
	Liability
7	Operation
	Assembly
8	Calibration
9	Operating the Spreader
10	Maintenance
	Before Use
	After Each Use and Daily When in Use
	Hints
11	Exploded Parts Diagrams

WARNING

Magnesium Oxide will set hard if exposed to air, it is of utmost importance that the spreader be cleaned of all product even if stored for a short time. Load the spreader only with the amount required to be spread and clean all traces of product from the machine after use.

Failure to do so will void warranty.

INTRODUCTION

Congratulations. You have just purchased an advanced spreader from C-Dax Ltd. C-Dax Ltd is committed to providing you, the farmer, with quality applying systems.

DESCRIPTION

The C-Dax **MagMaster** is a ground-driven spreader designed specifically for the application of powdered Magnesium Oxide, available in 2 size options, 65L or 165L. The uniquely designed translucent non-corrosive polyethylene hopper is specially profiled for good product flow, ease of filling and ensuring almost all product is emptied. The distinctive polyethylene shroud guides powder away from the frame, shaft and gearbox assembly. A high-quality stainless steel agitator and shutter ensure even flow of product to the spinner. A unique spinner design ensures optimal spread of fine powders such as Magnesium Oxide. The heavy-duty galvanised frame is fitted with turf tyres as standard equipment. The drive train uses high quality steel and a double sealed self-aligning bearing and heavy-duty gearbox for maximum durability. While seated, the operator has access to the control handle which controls the opening and closing of the shutter. The supplied pin is placed through the axle shaft which engages the gearbox and this rotates the spinner.

Specifications

(Specifications subject to change without notice)

Dry Weight	57 Kg (65L) 130 Kg (165L)
Dimensions	W1380mm, H1330mm, L1400mm (65L) W1400mm, H1240mm, L1400mm (165L)
Capacity	65 litre (40Kg Magnesium Oxide) 165 litre (100Kg Magnesium Oxide)
Drive	Ground driven (single wheel)
Wheels	18x750x8 4-Ply turf tread (tubeless)
Tyre pressure	12PSI (82Kpa)
Clutch	Removable pin
Control	Adjustable stop pin sets max output, control handle opens shutter
Agitator	Mechanical arm, stainless steel
Spinner	Stainless steel (65L) Electro-Galv Steel (165L)
Hopper	Non-corrosive polyethylene, designed for good product flow, ease of filling and ensuring almost all product is emptied.
Hopper cover	Polyethylene plastic (65L) Vinyl soft cover (165L)
Frame	Galvanised steel
Gearbox	Heavy duty with double sealed bearings
Gearbox oil	300ml SAE30
Axle Bearings	Sealed ball races
Clutch bearing	Heavy-duty phosphor-bronze bush
Axle grease	General Purpose
Application Rate	Up to 13g/m ² (nominal, Magnesium Oxide @ 10 kph)
Spread width	65 litre - 3m (nominal, Magnesium Oxide @ 10 Kph) 165 litre – 3m (nominal, Magnesium Oxide @ 10 Kph)
Towing speed	10 Kph (Maximum recommended)

NZ

Order Information

MagMaster 65	P/N 3002
MagMaster 165	P/N 3012

WARRANTY

C-Dax LTD warrants to the original purchaser that the equipment is sold free from defects in materials and workmanship for a period of 12 months from date of retail sale (6 Months from date of retail sale for all equipment sold in the U.K.).

Accordingly, C-Dax LTD undertakes to repair the equipment, or at our option replace, without cost to the original purchaser either for materials, parts or labour, any part which within the specified warranty period from time of delivery is found to be defective. PROVIDED that the equipment has been used for normal purposes in accordance with the instructions, and has not been subject to neglect, misuse or accident, and has not been repaired, serviced or dismantled by any person other than a service agent or person authorised by C-Dax LTD.

The warranty does not extend to cover: consequential damage; repair or replacement of parts due to fair wear and tear; or damage resulting from neglect, misuse, accident or hireage. SPECIFICALLY the warranty excludes battery damage, damage arising from chemical attack, and units built to customers specifications.

All goods returned to C-Dax LTD are freight paid by the **sender** and if subject to a warranty claim, **must** be accompanied by a completed warranty claim form. Warranty claim forms are available from C-Dax dealers.

LIABILITY

The maximum liability, which is accepted by C-Dax LTD, is limited to replacement of faulty goods only. Every care has been taken in the manufacture of our goods but because use of the goods is outside the control of the manufacturer, the end user assumes all responsibility for the use. Neither the manufacturer nor retailer shall be liable for loss or damage resulting from use.

Any advice or recommendations given by C-Dax LTD, its agents, or employees is given in good faith and based on the best information available to us. No liability or responsibility is accepted or implied as a result of any information or advice tendered by C-Dax LTD, its agents or employees. The end user accepts all responsibility arising from that advice.

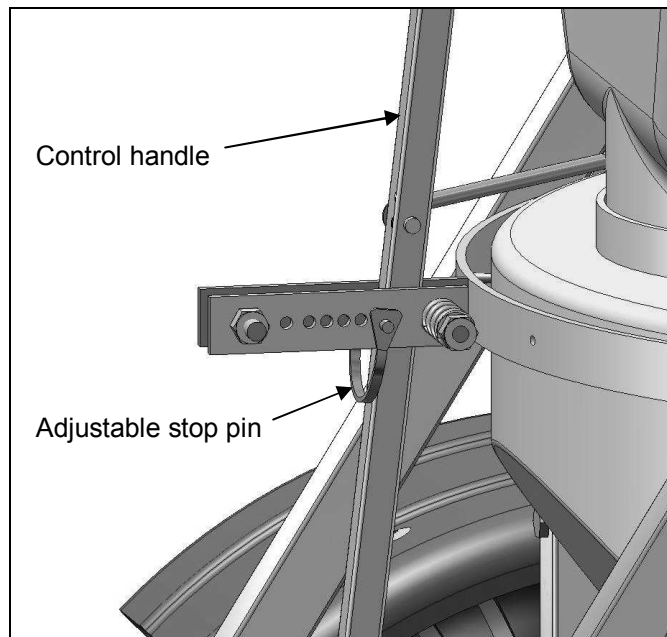
OPERATION

The product to be spread is placed in the hopper. When the spreader is towed forward, the right hand wheel drives through the pin clutch and gearbox to turn the spinner in a clockwise direction. When the control handle is pulled forward, the shutter at the bottom of the hopper rotates to an open position. The size of the opening is set by the adjustable stop pin, which locates into one of five pre-set positions.

An extension of the spinner boss is connected to a stainless steel agitator arm inside the bottom of the hopper. This agitator ensures that product flows continuously out of the hopper to the spinning disk.

After calibration, fill the hopper to the required level and commence spreading. Do not overfill your hopper; the maximum permissible payload is 40Kg. To prevent damage to product, disconnect the axle drive pin to the gearbox until spreading is to be commenced.

To prevent the shutter from opening during travel to the paddock, move the adjustable stop pin to the rear-most hole. This will lock the control handle in place and keep the shutter closed. See following diagram.

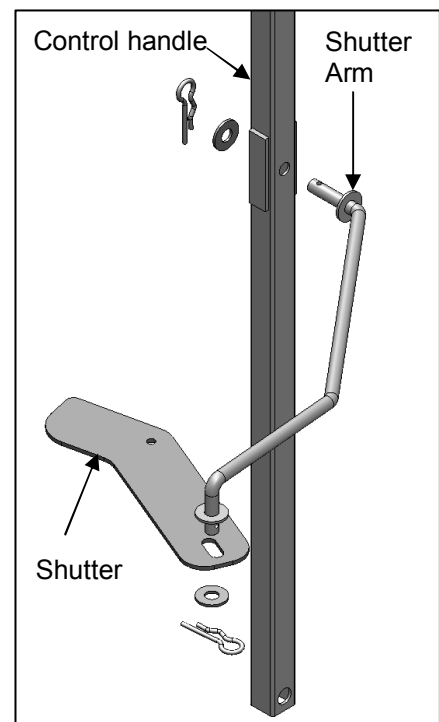


Adjustable stop pin shown in rear-most hole.

ASSEMBLY

1. Slide the drawbar into the frame and secure using 1 x M12x65 bolt and Nyloc nut.
2. Slide the Control handle down between the 2 indicator brackets and fit in place with 1x M10x50 bolt and Nyloc nut, fit 10mm washer between the arm and the bracket welded to the main frame.
3. Find the shutter arm. Attach this arm to the control handle and shutter as shown to the right.

NB: Keep area around the handle and indicator bracket clean and lubricated after every use.



CALIBRATION

Magnesium Oxide powder is applied at a rate determined by the number of cows to be treated. When spreading this product, calculate the weight of powder to be applied and apply this amount with the adjustment stop pin in position 1-5. Use the table below to work out which setting is most appropriate.

Magmaster 65L Nominal application rates (grams/m²) for Magnesium Oxide spread at 10Kph

	Adjustment Stop Pin	Application Rate (g/m ²)
Low	1	1.6
	2	2.7
	3	3.8
	4	8.2
High	5	12.6

Magmaster 165L Nominal application rates (grams/m²) for Magnesium Oxide spread at 10Kph

	Adjustment Stop Pin	Application Rate (g/m ²)
Low	1	0.6
	2	1.5
	3	2.5
	4	4.5
High	5	8.2

NOTE

Because of variations in product characteristics, speedometer calibration and driving speed, the information in the calibration guide should be regarded as a starting point only.

OPERATING THE SPREADER

When the spreader has been correctly calibrated, the hopper may be filled to the required level and spreading commenced.

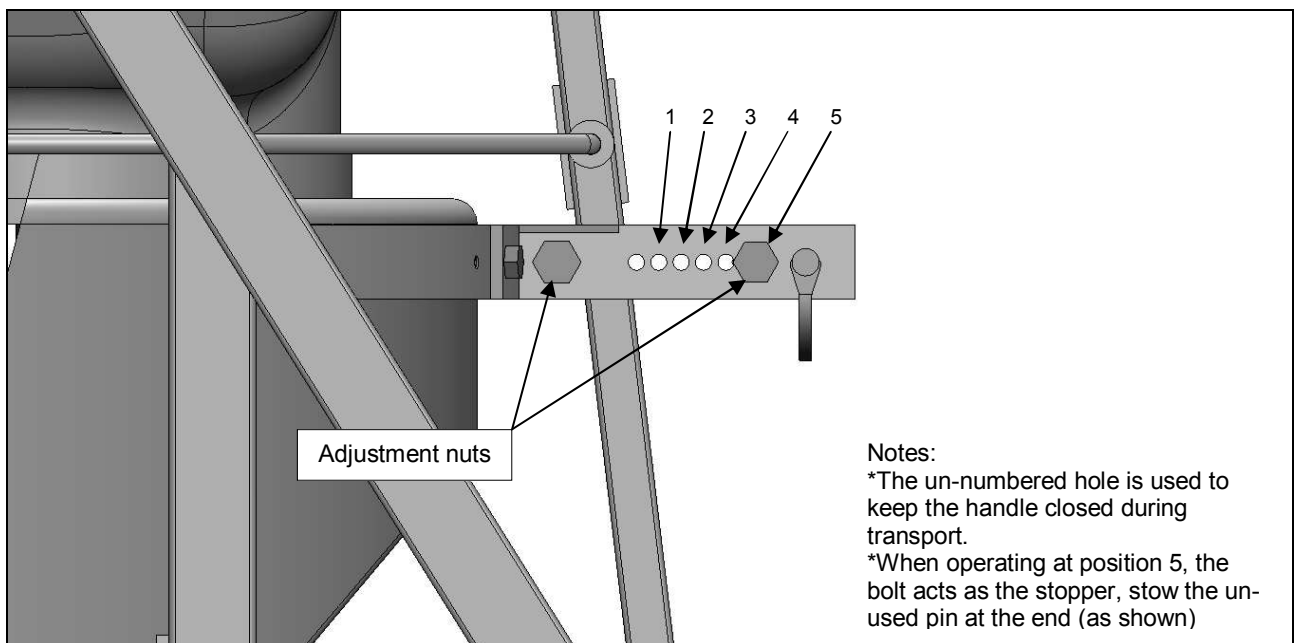
To reduce agitator damage to product and to ensure that product is not forced past the agitator shaft when towing the spreader to the area to be treated, the drive to the gearbox should be disconnected by removing the pin from the drive axle.

WARNING

To prevent damage to the spreader do not tow the spreader at speeds in excess of 15 Kph.

To prevent inadvertent operation of the shutter while the spreader is in transit it is recommended that the adjustable stop pin be moved to the rear-most hole.

To prevent the shutter from vibrating closed when the spreader is operated over rough ground, the control handle friction may be increased by tightening the two adjustment nuts at either end of the index plate.



WARNING

Due to the nature of Magnesium Oxide it is **not** recommended that the spreader be filled with product if the spreader is to be towed a large distance to the paddock, as the product will pack down and could potentially damage the agitator.

MAINTENANCE

WARNING

Magnesium Oxide will set hard if exposed to air, it is of utmost importance that the spreader be cleaned of all product even if stored for a short time. Load the spreader only with the amount required to be spread and clean **all** traces of product from the machine after use.

Failure to do so will void warranty.

The following maintenance actions are mandatory for reliable use of the spreader.

Before Use

Check the tyre pressures and charge with air as required. The correct pressure is 12PSI (82Kpa).

Disengage the gearbox drive pin then turn the spinner by hand to ensure it is free to turn without interference.

Check fasteners around the gearbox, shaft and mudguards for tightness.

Check the hopper to ensure that no debris is inside.

If the spreader has not been used for some time, grease the bearings (pay particular attention to the pin clutch bearing).

Check the gearbox for leaks. If leaks are detected it will be necessary to drain and replenish the gearbox with 300ml of SAE 30 oil.

CAUTION

To replenish the gearbox of oil, the spreader may be inverted to place the filler plug uppermost. However, in doing so extreme care must be taken to prevent damage to the spinner and deflectors.

After Each Use or Daily When In Use

Remove all traces of product from the spreader by brushing or washing. Pay particular attention to areas where product has accumulated and built up. Remove by scraping if necessary taking care not to damage the surface finish of the spreader or its components.

NOTE

Cleanliness of the Magmaster is of the upmost importance, all moving part must be kept clean and clear of any build up of material, failure to do so could cause irreparable damage to the machine

If washing, do not direct high-pressure water onto the gearbox, axle or wheel bearing seals.

After washing, grease the bearings (three places) and apply water-displacing fluid such as WD 40 or LPS3 to all metal parts.

Check for damaged or worn components and replace as required.

HINTS

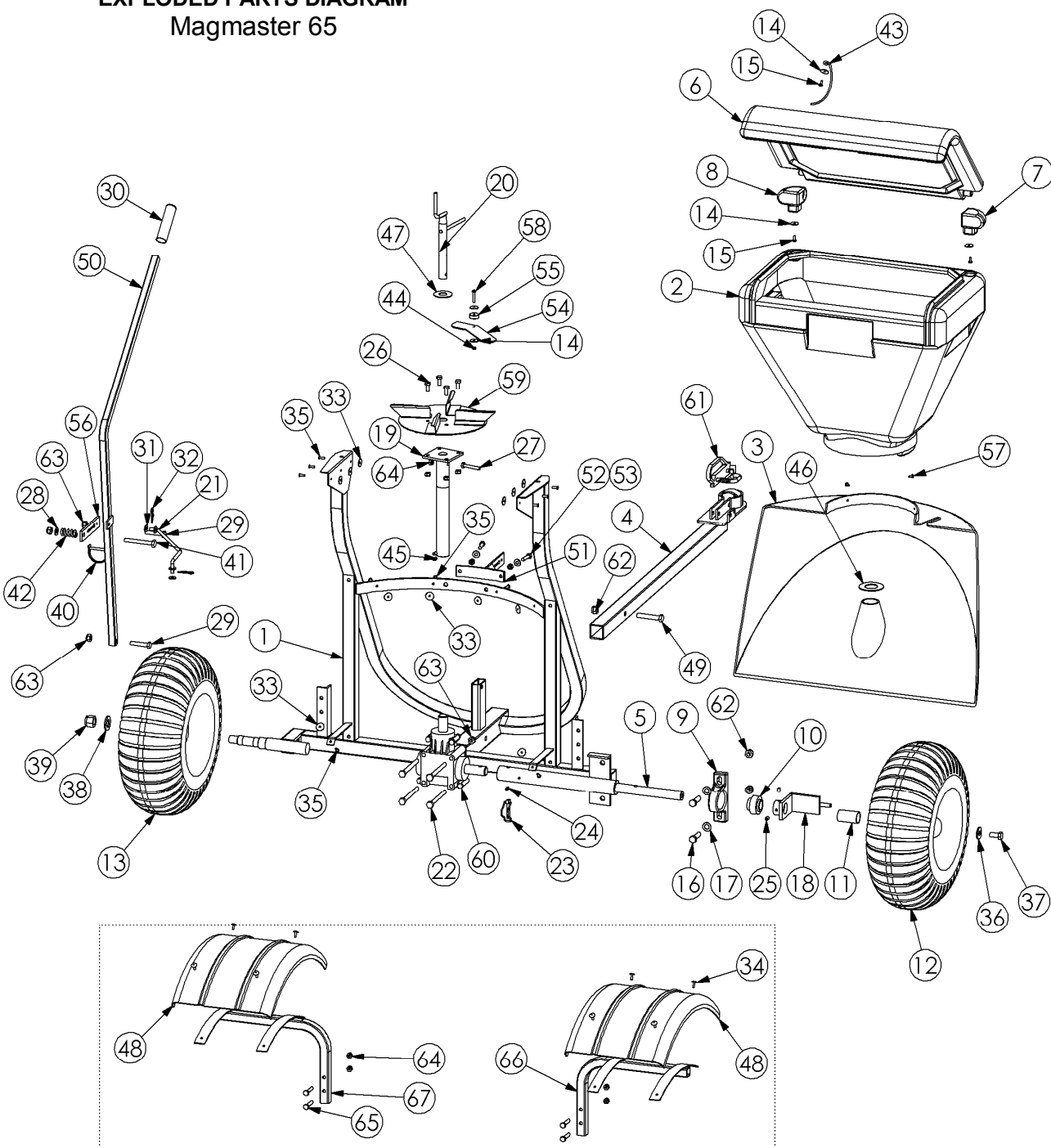
When greasing the pin clutch bearing in the axle assembly, leave the pin in place. This will assist the grease to fully enter the scroll in the axle and prevent the axle from being displaced if the bearing housing should be over pressurised with grease.

If the drive axle is removed from the axle housing for any reason care must be taken to ensure that both the axle scroll and bronze bush are clean and free of debris before reassembly.

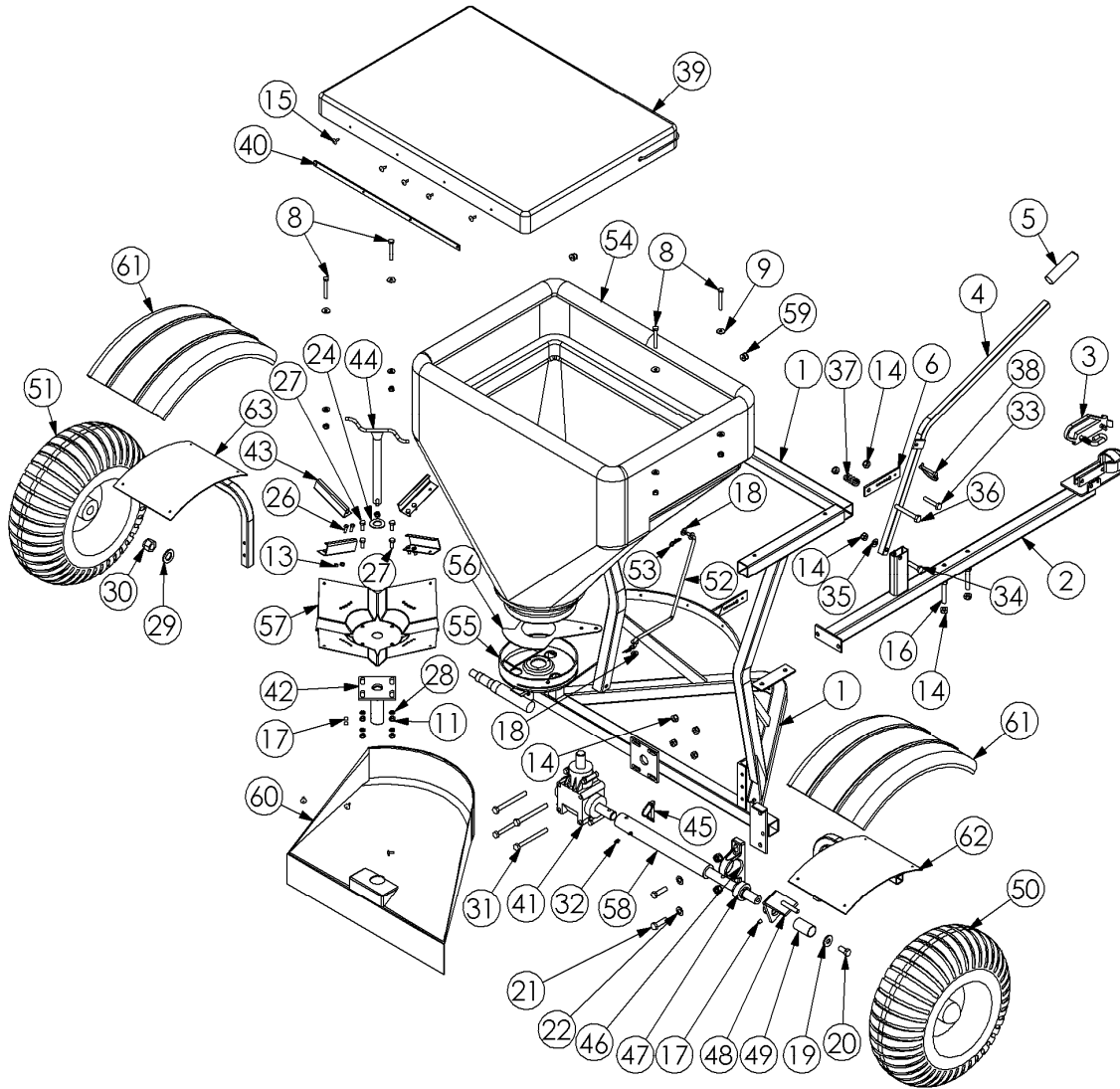
To remove the agitator from the hopper, remove the bolt, which attaches the agitator shaft to the spinner flange assembly then withdraw the agitator from inside the hopper. When ordering replacement parts always quote the spreader Serial Number and the Part Number of the required part.

EXPLODED PARTS DIAGRAM Magmaster 65

Item No.	QTY.	E9 Part No	E9 Description
1	1	3500-5800	Frame-Spreader-Magmaster-GL
2	1	7500-2180	Rota-Hopper-Spreader-Magmaster -Yellow-MDPE
3	1	7500-2700	Rota-Shroud-Spreader Magmaster-Yellow-MDPE
4	1	2550-1300	Drawbar-Causmag-GL
5	1	5200-6700	Machined-Axle-Gearbox Drive-Magmaster-Black
6	1	7500-2520	Rota-Lid-Hopper-SM70/75L,MagM-Blue-MDPE
7	1	7500-2010	Rota-Hinge-RH-SM70/75,Magmaster-Blue-MDPE
8	1	7500-2000	Rota-Hinge-LH-SM70/75,Magmaster-Blue-MDPE
9	1	1140-4000	Bearing-Housing-Pillow Block-Drive Axle-Spreaders
10	1	1140-1200	Bearing-Ball-Pillow Block-Drive Axle-Spreaders
11	1	2250-1000	Cover-Axle Shaft-Spreader 130L/165L/Magmaster-PVC
12	1	9200-8600	Wheel-Turf-Bearing-18x750x8-Tubeless
13	1	9200-8600	Wheel-Turf-Bearing-18x750x8-Tubeless
14	5	3310-9210	Fastener-Washer-Flat-3/16"x7/8"x1.5-Grade 304-Stainless
15	3	3090-0512	Fastener-Machine-Screw-Pan-M5x12-Phillips-Stainless
16	2	3290-1240	Fastener-Set Screw-Hex-8.8 Grade-M12x40-ZP
17	2	3310-6012	Fastener-Washer-Flat-M12-ZP
18	1	1300-4100	Bracket-Drive-Spreaders-ZP
19	1	8200-5100	Spinner-Mount-Causmag-ZP
20	1	1036-8230	Agitator-Spreader-Causmag-SS
21	1	5050-7920	Linkage-Shutter-Causmag-ZP
22	4	2840-1110	Fastener-Bolt&Nut-Hex-8.8 Grade-M10x110-ZP
23	1	6100-4840	Pin-Locking-8x45mm-Snapon Pipe-ZPG
24	1	5270-1014	Nipple-Grease-1/4UNF-Short-ZP
25	2	3010-5200	Fastener-Grub Screw-Socket Head-3/8x3/8-Stainless
26	4	3290-0820	Fastener-Set Screw-Hex-8.8 Grade-M8x20-ZP
27	1	3290-0850	Fastener-Set Screw-Hex-8.8 Grade-M8x50-ZP
28	1	3310-6010	Fastener-Washer-Flat-M10-ZP
29	2	3290-1050	Fastener-Set Screw-Hex-8.8 Grade-M10x50-ZP
30	1	3865-3800	Crip Handle-7/8" PVC-Black-Plastic
31	2	3310-6008	Fastener-Washer-Flat-M8-ZP
32	2	2050-7300	Clip-R Type-Pin-2.5MM-ZP
33	12	3310-9210	Fastener-Washer-Flat-3/16"x7/8"x1.5-Grade 304-Stainless
34	8	3240-0015	Fastener-Rivet-Blind-Truss Head-3/16x15mm-Aluminium
35	12	3240-5100	Fastener-Rivet-Blind-Truss Head-5x5/8"-Stainless
36	1	3310-5012	Fastener-Washer-Flat-Heavy-M12x32x3-Galv
37	1	3290-1225	Fastener-Set Screw-Hex-8.8 Grade-M12x25-ZP
38	1	3310-5021	Fastener-Washer-Flat-M20x39x3-Axle-ZP
39	1	9200-9001	Wheel-Sundry-Nut-Stub Axle-3/4"UNF-Nyloc-ZP-(With Wheel)
40	1	6100-4820	Pin-Locking-6x50mm-ZP
41	1	2840-1080	Fastener-Bolt&Nut-Hex-8.8 Grade-M10x80-ZP
42	1	8250-1800	Spring-Compression-Crinkle Plate-ZP
43	1	2230-1100	Cord-Arrestor-Hinged Spreader Lid
44	1	3130-0105	Fastener-Nut-Nyloc-M5-Stainless
45	2	3010-0810	Fastener-Grub Screw-Socket Head-M8x10-Stainless
46	1	6500-9000	Profiled-Washer-Spinner Shaft-34.9x67x2mm-Stainless 304
47	1	3310-9750	Fastener-Washer-Flat-23.5x2"x1.5-Grade 316-Stainless
48	2	7500-2590	Rota-Mudguard-Blue-MDPE-1/4 Circle
49	1	2840-1265	Fastener-Bolt&Nut-Hex-8.8 Grade-M12x65-ZP
50	1	4050-1300	Handle-Causmag-ZP
51	1	1300-4550	Bracket-Handle Position-Index-RH-MM65-ZP
52	2	3290-0830	Fastener-Set Screw-Hex-8.8 Grade-M8x30-ZP
53	2	3310-6008	Fastener-Washer-Flat-M8-ZP
54	1	6500-7800	Profiled-Shutter-Magmaster-Spreader-Stainless
55	1	2700-0750	Fabricated-Plastic-Round-OD 25x9mm Long-Drilled-UHMPE
56	1	6500-4201	Profiled-Index-Plate-MAG/130L/165L Spreader-ZP
57	2	3280-1013	Fastener-Self Tap-Screw-Pan-10Gx1/2"-Pozi-Stainless
58	1	3090-0530	Fastener-Machine-Screw-Pan-M5x30-Phillips-Stainless
59	1	8200-5000	Spinner-Magmaster-SS
60	1	3800-2000	Gearbox-Ferroni-RV12-2-6-Ratio 1 to 3.25
61	1	8800-3800	Tow-Coupling-Handle-Double Ended-1 78 x 50mm-ZP
62	3	3170-0012	Fastener-Nut-Nyloc-M12-ZP
63	7	3170-0010	Fastener-Nut-Nyloc-M10-ZP
64	11	3170-0008	Fastener-Nut-Nyloc-M8-ZP
65	4	3290-0840	Fastener-Set Screw-Hex-8.8 Grade-M8x40-ZP
66	1	1300-6801	Bracket-Mudguard-CDIT300/400/MM165-RH-GL
67	1	1300-6800	Bracket-Mudguard-CDIT300/400/MM165-LH-GL



EXPLODED PARTS DIAGRAM
Magmaster 165



Item No.	e9 part no	e9 description	QTY.
1	3500-5305	Frame-Spreader-MM/In-Ex 165L-GL	1
2	2550-8203	Drawbar-Spreader 165L/Magmaster 165-GL	1
3	8800-3800	Tow-Coupling-Handle-Double Ended-1 7/8" x 50mm-ZP	1
4	4050-8105	Handle-Spreader 165L/Mag 165-ZP	1
5	3865-3800	Grip-Handle-7/8"-PVC-Black-Plastic	1
6	6500-4201	Profiled-Index-Plate-MAG/130L/165L Spreader-ZP	1
7	3010-5200	Fastener-Grub Screw-Socket Head-3/8x3/8-Stainless	1
8	2810-0860	Fastener-Bolt&Nut-Hex-304 Grade-M8x60-Stainless	4
9	3310-2809	Fastener-Washer-Flat-M8x22x1.5-Grade 316-Stainless	4
10	3310-6008	Fastener-Washer-Flat-M8-ZP	4
11	3170-0008	Fastener-Nut-Nyloc-M8-ZP	9
12	3170-0012	Fastener-Nut-Nyloc-M12-ZP	2
13	3170-0006	Fastener-Nut-Nyloc-M6-ZP	8
14	3170-0010	Fastener-Nut-Nyloc-M10-ZP	9
15	3240-0015	Fastener-Rivet-Blind-Truss Head-3/16x15mm-Aluminium	8
16	2840-1065	Fastener-Bolt&Nut-Hex-8.8 Grade-M10x65-ZP	2
17	3010-0810	Fastener-Grub Screw-Socket Head-M8x10-Stainless	3
18	3310-6008	Fastener-Washer-Flat-M8-ZP	2
19	3310-5012	Fastener-Washer-Flat-Heavy-M12x32x3-Galv	1
20	3290-1225	Fastener-Set Screw-Hex-8.8 Grade-M12x25-ZP	1
21	3290-1240	Fastener-Set Screw-Hex-8.8 Grade-M12x40-ZP	2
22	3310-6012	Fastener-Washer-Flat-M12-ZP	2
23	3330-8012	Fastener-Washer-Spring-M12-ZP	2
24	3310-9720	Fastener-Washer-Flat-7/8"x1 5/8"x1.6-Grade 304-Stainless	1
25	3290-0850	Fastener-Set Screw-Hex-8.8 Grade-M8x50-ZP	1
26	3290-0616	Fastener-Set Screw-Hex-8.8 Grade-M6x16-ZP	8
27	3290-0820	Fastener-Set Screw-Hex-8.8 Grade-M8x20-ZP	4
28	3330-8008	Fastener-Washer-Spring-M8-ZP	4
29	3310-5021	Fastener-Washer-Flat-M20x39x3-Axle-ZP	1
30	9200-9001	Wheel-Sundry-Nut-Stub Axle-3/4"UNF-Nyloc-ZP-(With Wheel)	1
31	2840-1110	Fastener-Bolt&Nut-Hex-8.8 Grade-M10x110-ZP	4
32	5270-1014	Nipple-Grease-1/4UNF-Short-ZP	2
33	3290-1050	Fastener-Set Screw-Hex-8.8 Grade-M10x50-ZP	1
34	3290-1040	Fastener-Set Screw-Hex-8.8 Grade-M10x40-ZP	1
35	3310-6010	Fastener-Washer-Flat-M10-ZP	2
36	2840-1080	Fastener-Bolt&Nut-Hex-8.8 Grade-M10x80-ZP	1
37	8250-1800	Spring-Compression-Crinkle Plate-ZP	1
38	6100-4820	Pin-Locking-6x50mm-ZP	1
39	2250-4150	Cover-Hopper-Silver Fabric-Spreader 130/165	1
40	5245-4000	Mount-Hopper Cover-Spreader 130L/165L/Magmaster 165-AL	1
41	3800-2000	Gearbox-Ferroni-RV12-2-6-Ratio 1 to 3,25	1
42	8200-5305	Spinner-Mount-Spreader 165L/Magmaster 165-ZP	1
43	8910-8000	Vane-Spinner-Spreader 130L/165L/Magmaster 165-GL	4
44	1036-8223	Agitator-Spreader-165L/Magmaster 165-SS	1
45	6100-4840	Pin-Locking-8x45mm-Snapon Pipe-ZPG	1
46	1140-4000	Bearing-Housing-Pillow Block-Drive Axle-Spreaders	1
47	1140-1200	Bearing-Ball-Pillow Block-Drive Axle-Spreaders	1
48	1300-4100	Bracket-Drive-Spreaders-ZP	1
49	2250-1000	Cover-Axle Shaft-Spreader 130L/165L/Magmaster-PVC	1
50	9200-8600	Wheel-Turf-Bearing-18x750x8-Tubeless	1
51	9200-8600	Wheel-Turf-Bearing-18x750x8-Tubeless	1
52	5050-7903	Linkage-Shutter-165L/Magmaster 165-ZP	1
53	2050-7300	Clip-R Type-Pin-2.5MM-ZP	2
54	7500-2185	Rota-Hopper-Spreader-Magmaster 165L-Yellow-MDPE	1
55	7500-2835	Rota-Spout-Spreader-Magmaster 165L-Yellow-MDPE	1
56	6500-7770	Profiled-Shutter-CDIT300/400, 165L-Spreader-Stainless	1
57	8200-2100	Spinner-Disc-CDIT300/400-GL	1
58	5200-6700	Machined-Axle-Gearbox Drive-Magmaster-Black	1
59	1455-8800	Button-Ute Cover-Bungy Cord Retain-Black-Plastic	2
60	7500-2705	Rota-Shroud-Magmaster 165L-Yellow-MDPE	1
61	7500-2590	Rota-Mudguard-Blue-MDPE-1/4 Circle	2
62	1300-6801	Bracket-Mudguard-CDIT300/400-RH-GL	1
63	1300-6800	Bracket-Mudguard-CDIT300/400-LH-GL	1